

FROTHINGHAM

FIRST FLOOR

FIRST FLOOR BED COUNT:

FULL: 1 (2)

TOTAL CAPACITY = 1

(2 if 2 people in full size beds)

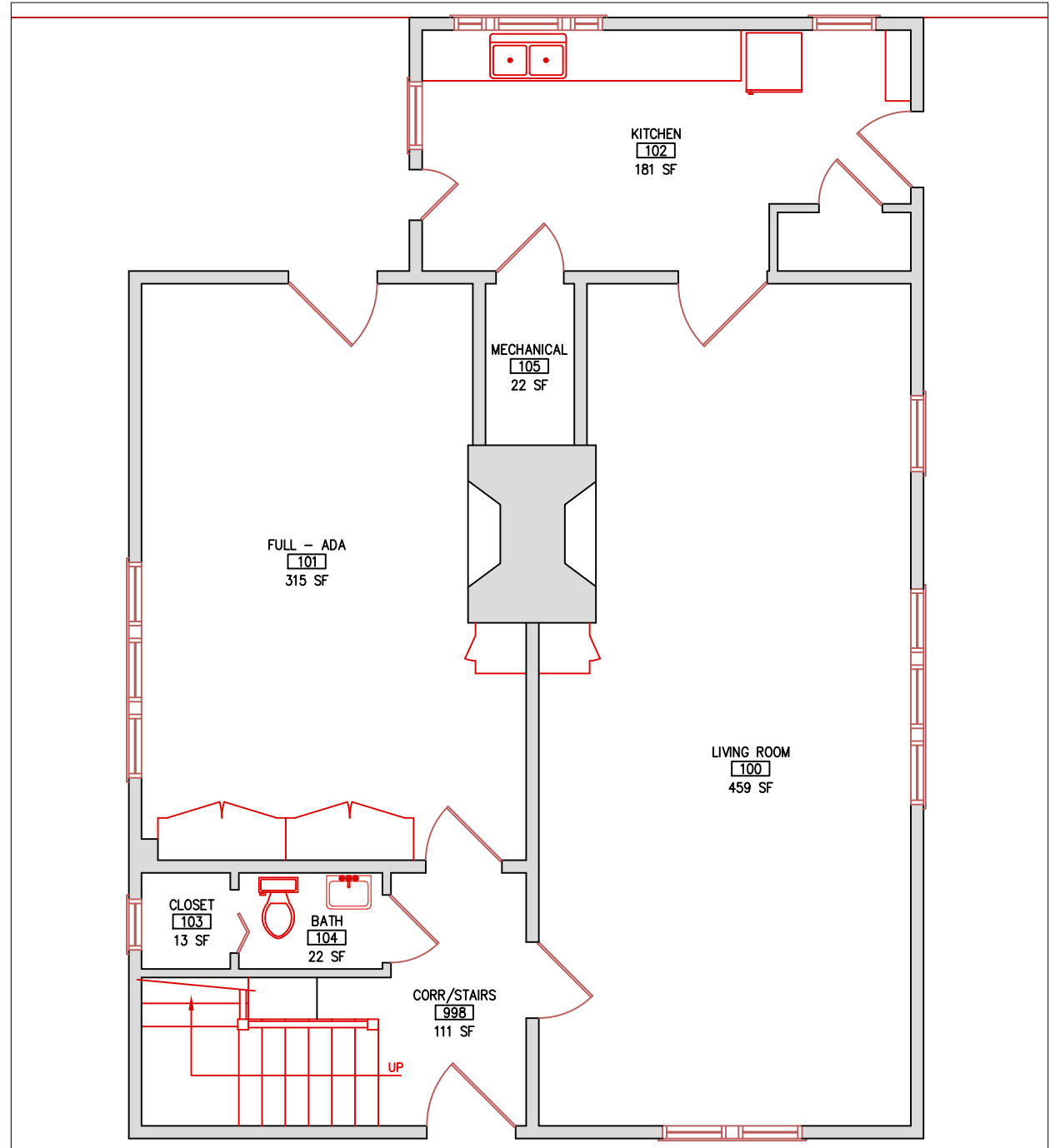
Total Capacity (1st & 2nd Floors) = 6

Total Capacity (1st & 2nd Floors if 2 in FULL beds) = 8

DOUBLE = 2 twin beds

FULL = 1 full size bed

ADA = handicap accessible



FROTHINGHAM

SECOND FLOOR

SECOND FLOOR BED COUNT:

FULL: 1 (2)

DOUBLE: 2 (4)

TOTAL CAPACITY = 5

(6 if 2 people in full size beds)

Total Capacity (1st & 2nd Floors) = 6

Total Capacity (1st & 2nd Floors if 2 in FULL beds) = 8

DOUBLE = 2 twin beds

FULL = 1 full size bed

ADA = handicap accessible

